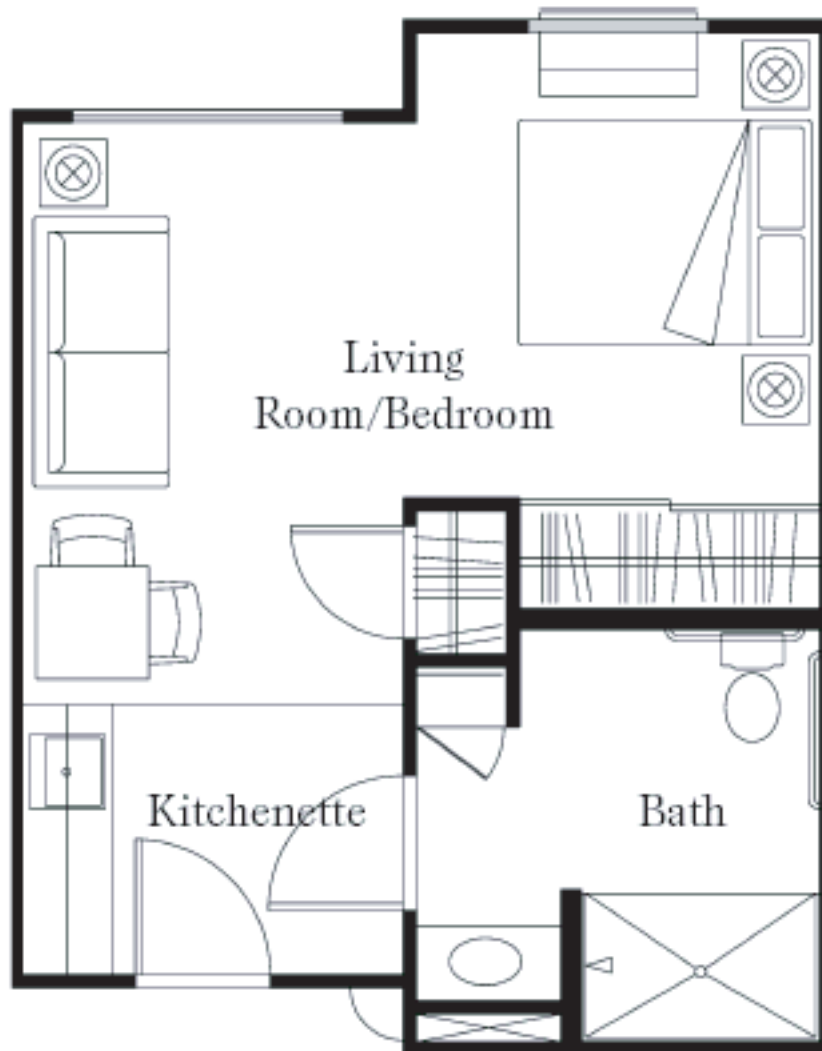
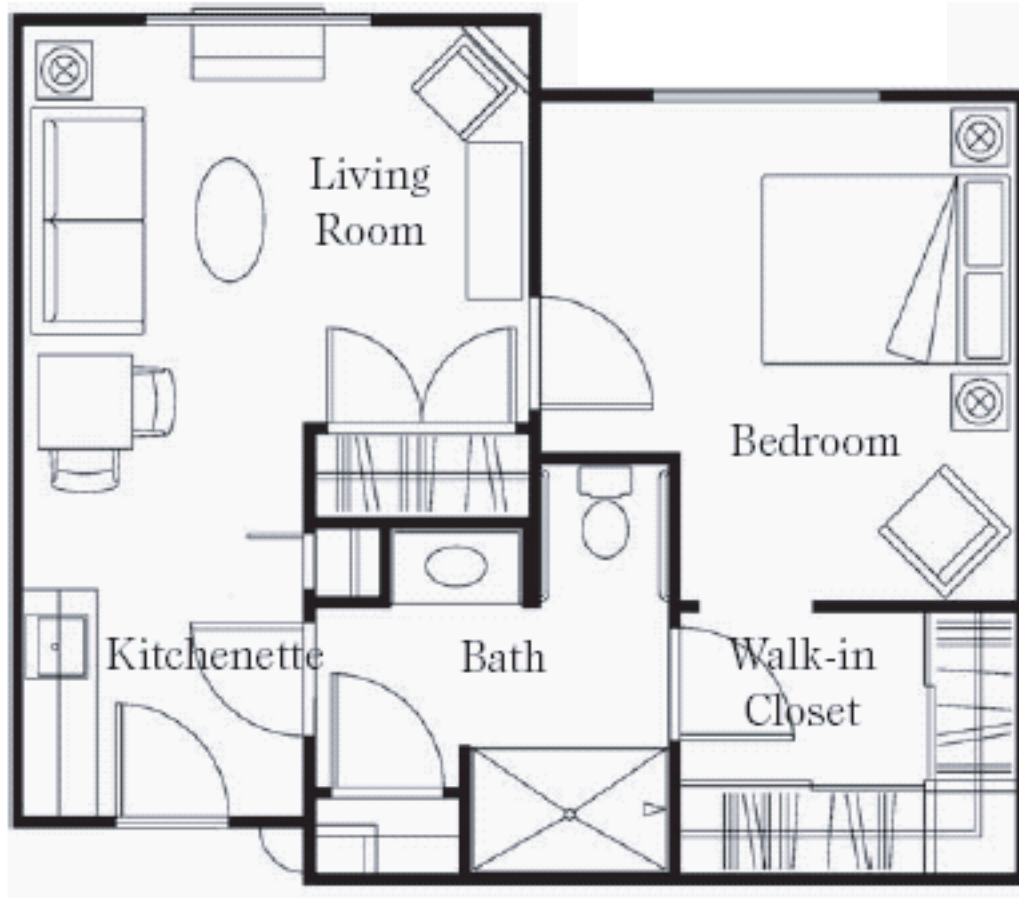


Eskaton Lodge Granite Bay



Studio
390 s.f. approx.

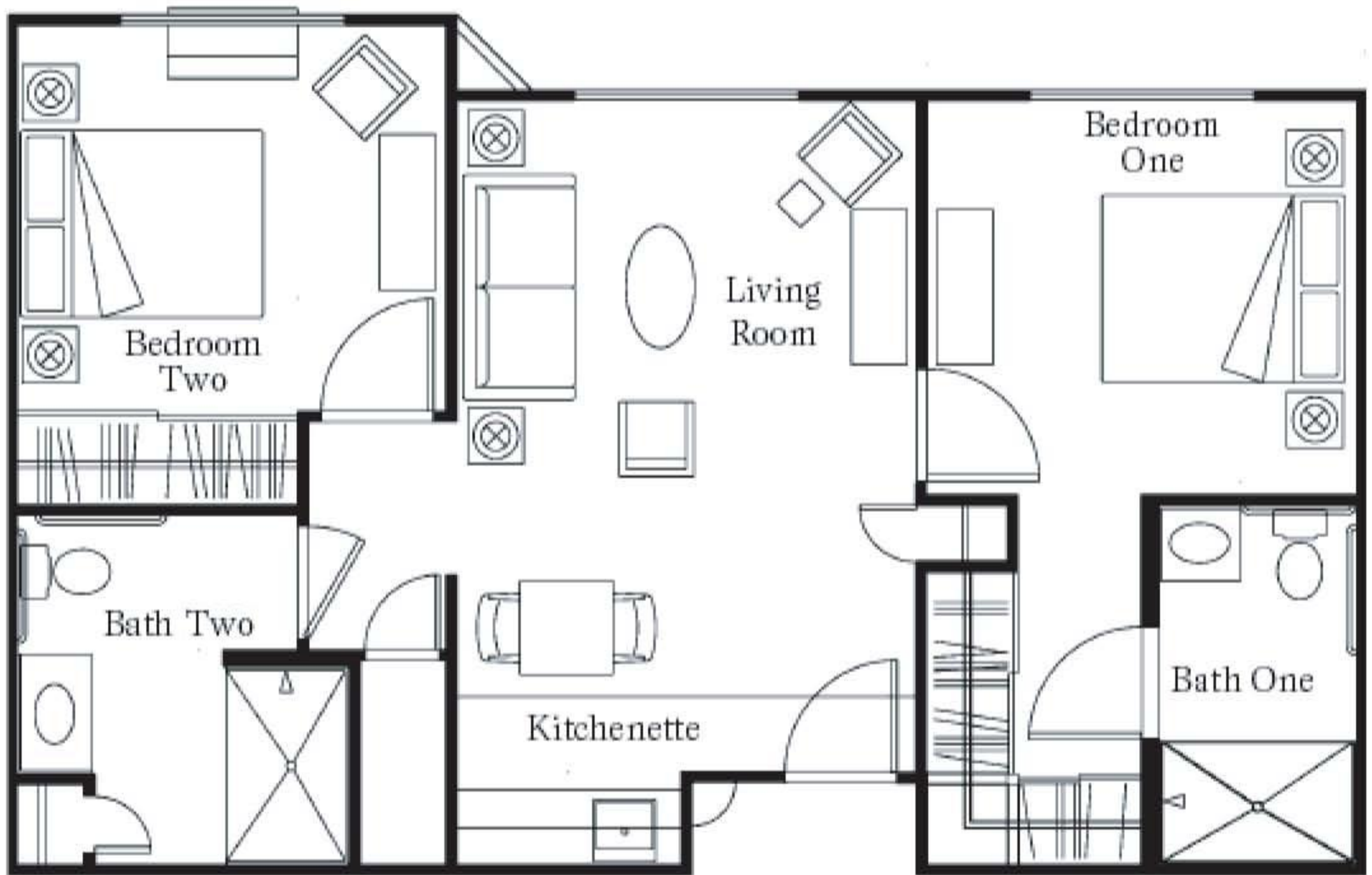
Eskaton Lodge Granite Bay



One-Bedroom
625 s.f. approx.

Eskaton Lodge Granite Bay

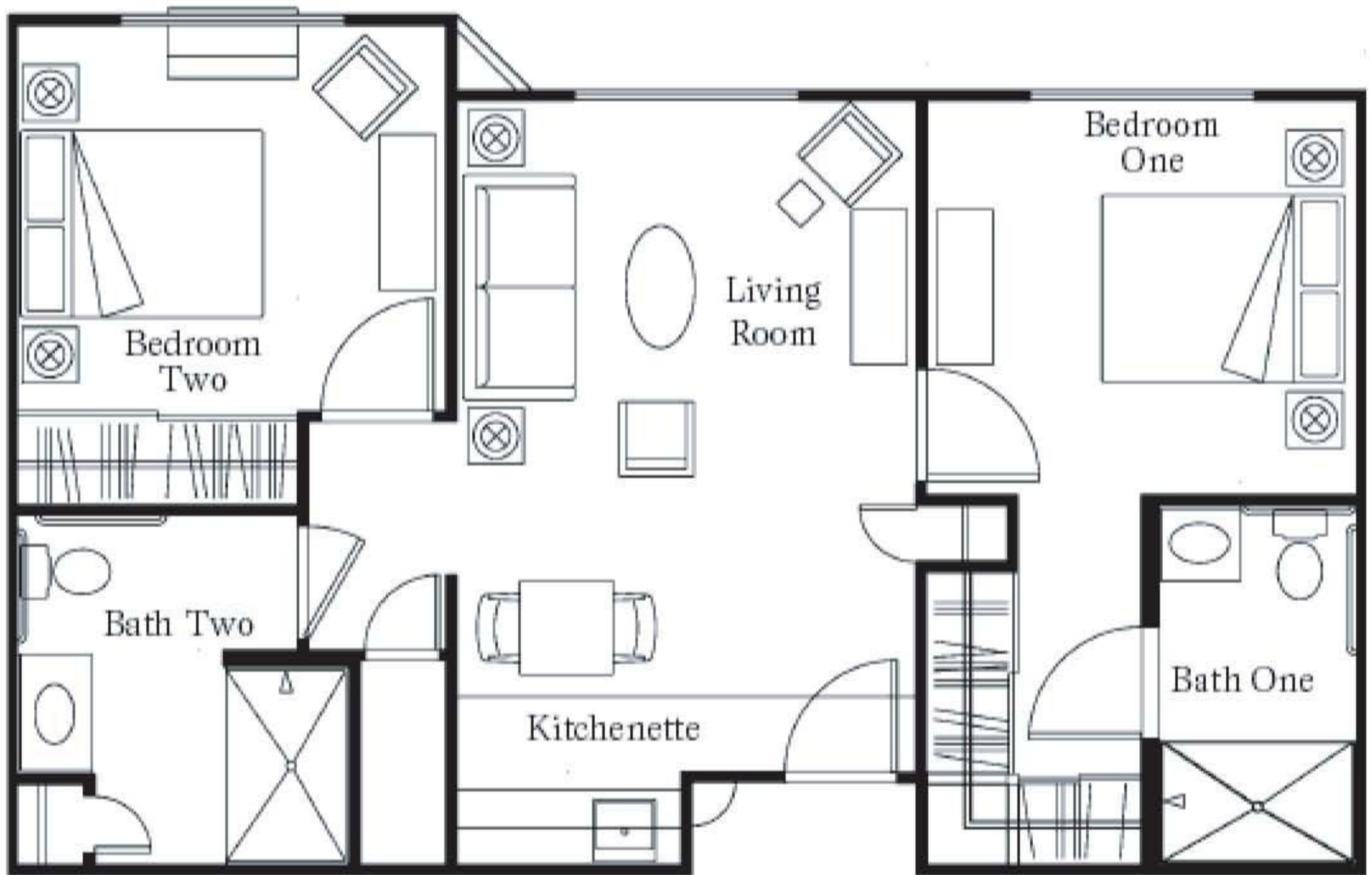
Independent Living



Two-Bedroom
773 s.f. approx.

Eskaton Lodge Granite Bay

Assisted Living



Two-Bedroom
773 s.f. approx.